



ELM Solutions

LegalVIEW® Dashboards

Early Adopter Program

We're making dashboards better than ever and you can help by being one of our early adopters. As part of the team, you will help drive our dashboards roadmap and receive:

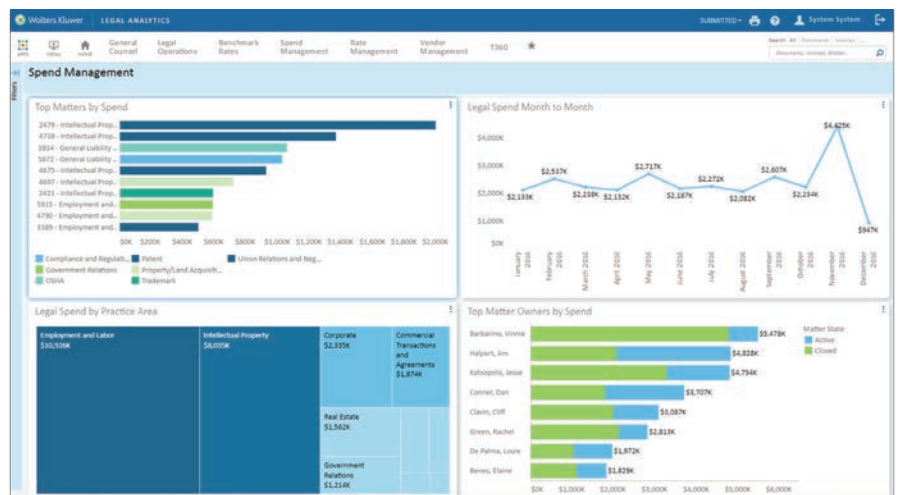
- Early access to a demo version of the dashboards
- Exclusive invitation to attend product review meetings and provide feedback
- Dashboard training and support
- Priority upgrades for current dashboards customers

For more information, contact your account manager or visit wkelmsolutions.com/legalview-info

LegalVIEW Dashboards provides business intelligence and at-a-glance views of key metrics and analytics for legal spend and legal operations. Easily visualize and track performance data with a simple, consolidated, and cohesive view of business information - transforming data into insights. LegalVIEW Dashboards can be used hand-in-hand with Passport® or TyMetrix® 360° applications, or with any other vendors' legal matter and spend management or claims defense solutions.

Visualize, track, and gain clear insight into legal spend and department operations.

- Easily understand performance against business goals and objectives with at-a-glance views of KPIs and business metrics
- Drill-down into interactive KPI dashboards to perform granular analysis of matters, operations, legal spend, and more, and enable better-informed business decisions
- Analyze and interpret data quickly using data visualisations on multiple dimensions of each KPI, as well as a variety of graphical formats, such as bar, column, and line charts and graphs
- Benchmark legal spend and legal operations performance against industry peers using data from LegalVIEW to identify where the legal or claims department excels, as well as opportunities for improvement



Gain clear insight into legal spend and department operations.

LegalVIEW® Dashboards

Efficiently share relevant information and communicate business performance with ease.

- Easily export data and KPIs into other formats, documents, and presentations to effectively communicate key metrics to executives and business partners
- Leverage the solution's support for custom-built KPIs to track and measure metrics and performance specific to a company's unique strategic objectives and quickly view and analyse the factors that most impact its business
- Ensure that users always have the most current and relevant data at hand using the solution's scheduling feature – dashboards can update on a set frequency and email reminders are sent to notify users when a dashboard is available for review

Enjoy secure, efficient, and easy deployment.

- Get started quickly – as a SaaS-based offering, the Dashboards solution requires no on-site installation or technical support
- Access the most current metrics and information with near-real-time data updates
- Leverage the solution's role-based security to ensure that data is only accessible to authorised users and that staff members have access to the information that is most relevant to their role

Key Features

- Pre-built dashboards
- Ability to build custom, client-specific dashboards
- Interactive drill-down capabilities
- Easy export of data to other formats
- Data visualization using bar, column, and line charts and graphs
- Ability to consolidate data from multiple sources
- Ability to compare internal data against industry benchmarks from LegalVIEW®
- SaaS-based; no on-site installation required

Sample KPIs

AFA Savings

- Savings by AFA Type
- Savings by Vendor

Budget Management

- Budget to Actual Spend
- Year to Date Budget vs. Actual

Matter Inventory Management

- Average Age of Open Matters by Month
- New, Open and Closed Matters by Month

Operational Management

- Average Monthly Cost of Open Matters
- Invoice Approval Age by Matter Owner

Spend Management

- Legal Spend Breakdown by Practice Area
- Top Matters by Spend

Vendor Management

- Staffing Allocation by Vendor
- Top Vendors by Spend

Contact

713 572 3282
 elmsolutionssales@wolterskluwer.com

www.wkelmsolutions.com